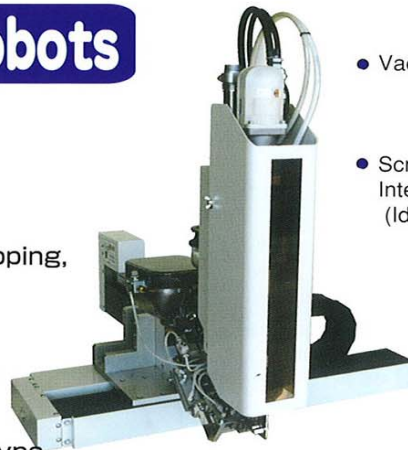


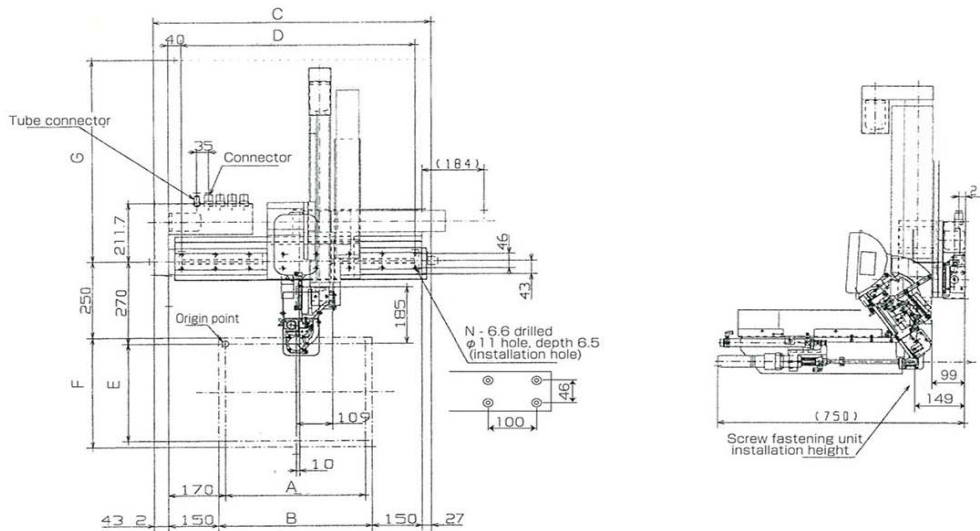
# Screw Fastener Robots

## NSRE

- Screw fastener driver  
AC servomotor (MINASU)
- Choice of normal tightening, skipping, additional tightening and temporary tightening
- Direct teaching, numerical input
- Programs: 32 types
- Program steps: 1000 steps/1 type

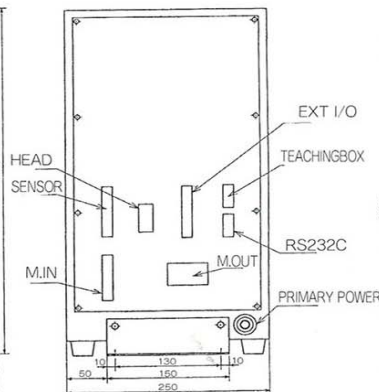
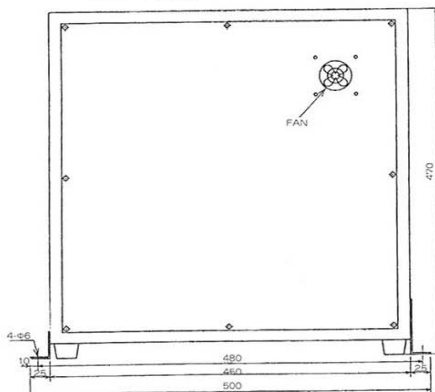


- Vacuum pickup pipe stroke  
100 mm  
150 mm  
200 mm
- Screw cassette type  
Integral hopper-chute quick-release type  
(Ideal for some types of screw tightening)



Model No.	X axis					Y axis		
	A	B	C	D	N	E	F	G
FT-0202	220st	260	630.2	500	12	220st	260	560
FT-0302	320st	360	730.2	600	14	220st	260	560
FT-0403	420st	460	830.2	700	16	320st	360	660
FT-0604	620st	660	1030.2	900	20	420st	460	760

### ● Screw fastener controller dimensions (mm) RD-1000



### ● Teaching box dimensions (mm) TP-1100

