

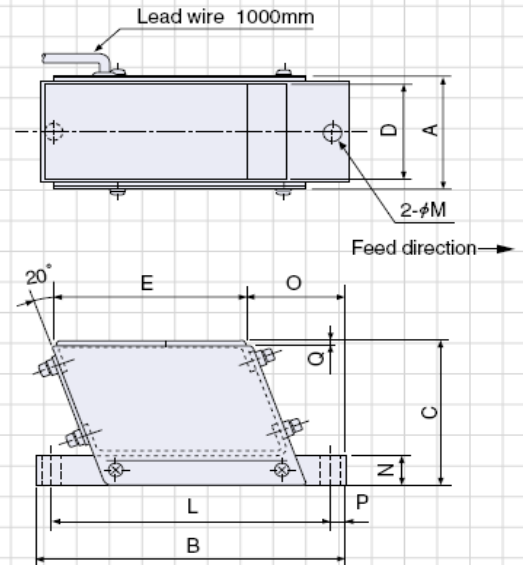
MF series—Unmounted Type

Compact yet powerful, for speedy delivery and versatile, longer distance conveyance

A new type of electromagnetic drive unit ideal for use with chutes handling very small, flat, and precision parts. Takes full advantage of merits of half wave operation for smooth conveyance of fragile and easily damaged workpieces.



MF-04B/15B Dimensions



Features

- **Compact yet powerful**

Small unit size with half wave operation capable of longer distance conveyance.

- **Speedy delivery, and versatile, longer distance conveyance**

High vibration frequency and amplitude give speedy delivery, and can meet a range of longer distance conveyance requirements

- **Easy, convenient installation**

Compact design takes up little space and allows easy, convenient installation.

*Users are asked to drill holes as required for chute attachment.

Specifications

Model	Voltage (V)	Current (A)	Vibration (Hz)	Weight (kg)	Standard compatible controllers
MF-04B	100/110 200/220	0.13 0.065	50/60	0.6	C4-5B C8-1VF
MF-15B	100/110 200/220	0.2 0.1	50/60	1.8	

Dimensions Chart

Model	A	B	C	D	E	L	M	N	O	P	Q
MF-04B	46	106	56	38	62	88	7	9	38	9	3.2
MF-15B	56	160	78	52	100	144	9	16	52	8	3.2

Unit: mm

Chute Specifications

Compatible linear feeder	Maximum length	Maximum width	Weight (kg)
MF-04B	300	35	0.4
MF-15B	450	45	1.5

Unit: mm

Note: Chute must straddle drive unit to distribute weight.