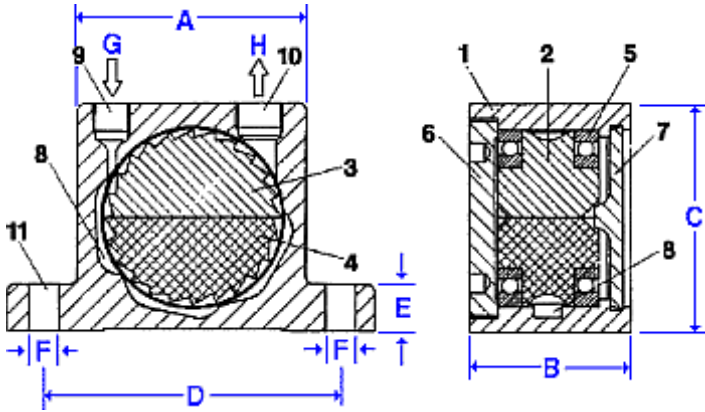


T-Series Turbine Vibrator



- Lower speed range
- Large working moment
- Require air line filter and lubricator

Dimensions:

Model	A		B		C		D		E		F		G	H	Weight	
	mm	inches	mm	inches	mm	inches	mm	inches	mm	inches	mm	inches	BSP Thread	BSP Thread	kg	Lbs
T-50/LP	50	1.97	46	1.81	86	3.38	68	2.68	12	0.47	7	0.27	1/8"	1/4"	0.385	0.86
T-50/HP	50	1.97	60	2.36	86	3.38	68	2.68	12	0.47	7	0.27	1/8"	1/4"	0.520	1.15
T-65/LP	65	2.56	50	1.97	113	4.45	90	3.54	16	0.63	9	0.35	1/4"	1/4"	0.735	1.60
T-65/HP	65	2.56	64	2.52	113	4.45	90	3.54	16	0.63	9	0.35	1/4"	1/4"	0.975	2.15
T-80/LP	80	3.15	56	2.20	128	5.04	104	4.09	16	0.63	11	0.43	1/4"	3/8"	1.210	2.70
T-80/HP	80	3.15	70	2.75	128	5.04	104	4.09	16	0.63	11	0.43	1/4"	3/8"	1.560	3.45
T-100/HP	100	3.94	67	2.64	160	6.30	130	5.12	20	0.79	13	0.51	3/8"	3/8"	2.270	5.00

Performance:

Model	Frequency V.P.M. x 1000			Centrifugal force*						Air consumption / Minute					
	2 Bar 29 PSI	4 Bar 58 PSI	6 Bar 87 PSI	2 Bar N	29 PSI LBS	4 Bar N	58 PSI LBS	6 Bar N	87 PSI LBS	2 Bar Ltr.	29 PSI CF	4 Bar Ltr.	58 PSI CF	6 Bar Ltr.	87 PSI CF
T-50/LP	17.0	21.5	23.0	700	157	1.240	279	1.710	385	67	2.4	115	4.0	165	5.8
T-50/HP	11.0	14.5	16.5	600	135	1.020	230	1.350	304	79	2.8	140	4.9	198	7.0
T-65/LP	9.5	13.0	15.0	770	173	1.380	310	1.800	405	89	3.1	157	5.5	236	8.3
T-65/HP	8.5	10.5	12.0	1.300	293	2.050	461	2.600	585	108	3.8	193	6.8	290	10.2
T-80/LP	9.0	11.5	13.0	1.840	414	2.960	666	3.790	853	150	5.3	260	9.2	385	13.6
T-80/HP	6.8	9.0	10.5	2.000	450	3.470	780	4.740	1.066	NA	NA	260	9.2	385	13.6
T-100/HP	6.5	9.0	10.0	2.480	558	4.800	1.080	6.060	1.364	NA	NA	300	10.6	430	15.2