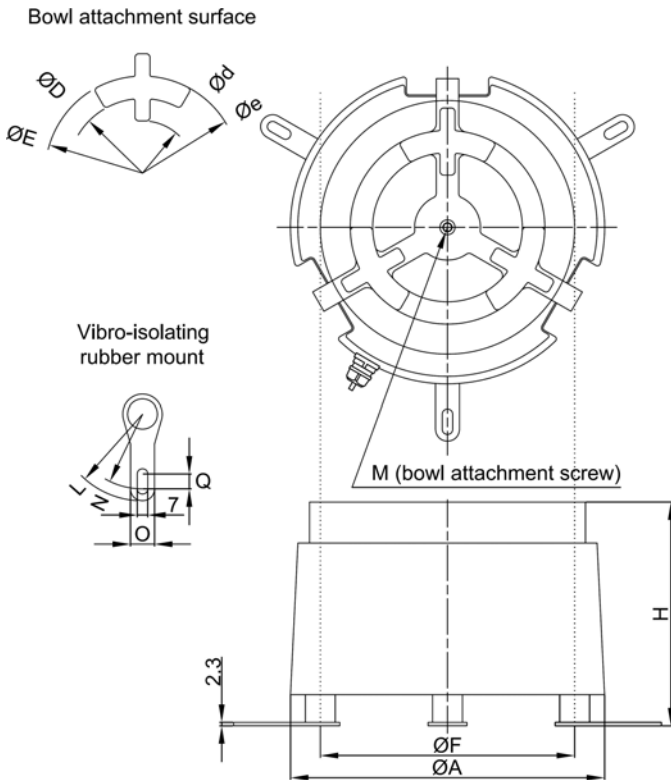


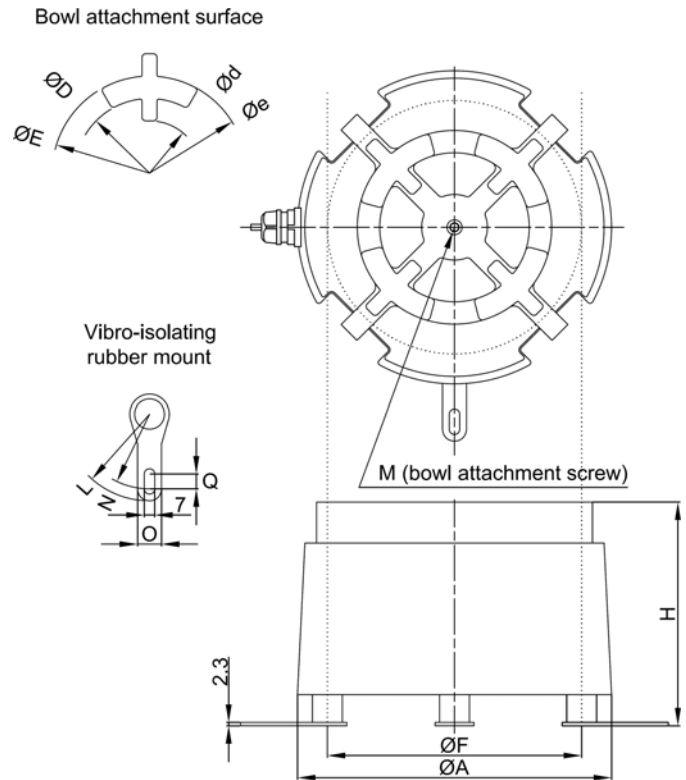
DMS series Drive Units

Accommodates bowls designed for EA and ER series

DMS-15/20



DMS-25/30/38/45



Drive Unit Specifications

Model	DMS-15	DMS-20	DMS-25	DMS-30	DMS-38	DMS-40
Drive unit outer diameter	Ø160mm	Ø210mm	Ø260mm	Ø310mm	Ø390mm	Ø460mm
Drive unit height	130mm	150mm	185mm	220mm	250mm	265mm
Drive unit weight	7kg	14kg	25kg	40kg	70kg	110kg
Rated voltage	200V					
Rated current	Horizontal	0.15A	0.25A	0.6A	2.0A	2.0A
	Vertical	0.15A	0.25A	0.3A	0.8A	0.8A
Vibration frequency	100 ~ 180Hz			70 ~ 110Hz		
Unprocessed bowl diameter <small>(cylindrical)</small>	Ø150mm	Ø200mm	Ø250mm	Ø300mm	Ø375mm	Ø450mm
Max. bowl diameter <small>(cylindrical)</small>	Ø250mm	Ø320mm	Ø400mm	Ø500mm	Ø600mm	Ø700mm
Max. amplitude <small>(Unprocessed cylindrical bowl periphery)</small>	Horizontal	0.6mm		1.0mm		
	Vertical	0.13mm				
Max. loaded weight <small>(workpieces + bowl weight)</small>	2.3kg	4kg	8kg	12.5kg	17kg	26kg
Lead wire	5 x 0.5mm ² wire			5 x 0.75mm ² wire		
Applicable Controller	C9-4DM					

Dimensions Chart

Model	H	ØA	ØB	M	ØF	L	N	O	Q	ØD	ØE	Ød	Øe
DMS-15	127~130~133	160	150	M8	130	58	50	16	10	72	94	50	120
DMS-20	147~150~153	210	200	M10	170	58	50	16	10	100	130	50	120
DMS-25	182~185~188	260	250	M12	216	58	50	16	10	140	160	100	200
DMS-30	215~220~225	310	300	M12	252	85	75	20	20	172	192	140	240
DMS-38	245~250~255	390	380	M16	324	85	75	20	20	215	240	170	300
DMS-45	260~265~270	460	450	M16	390	85	75	20	20	270	300	210	350

Unit: mm