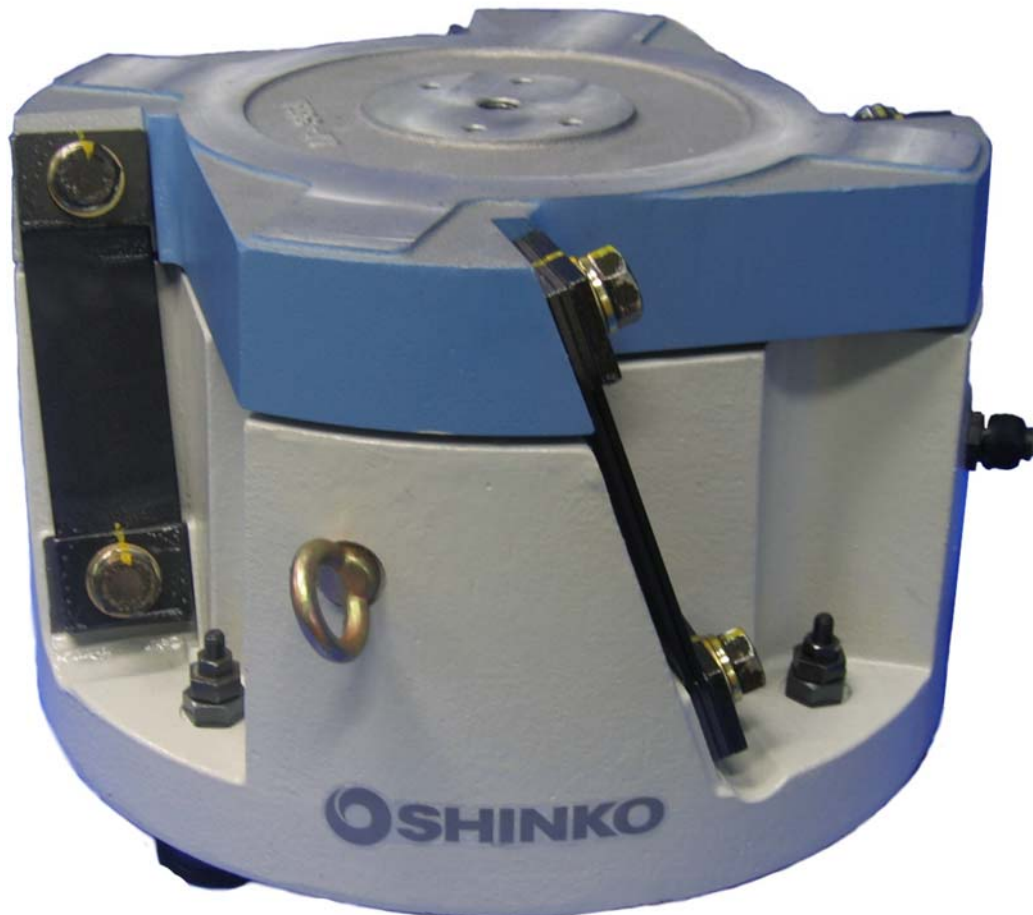


# EA series—100-180Hz

For handling a wide range of very small, precision workpieces

With high vibration frequencies of 100 to 180 Hz and small amplitude of 0.6 mm, this series is ideal for very small (10 mm or less), high precision or ultra thin workpieces. It can accommodate bowls ranging from 150 to 700 mm in diameter for highly reliable conveyance.



## Specifications

Model	EA-15	EA-20	EA-25	EA-30	EA-38	EA-45
Drive unit outer diameter	Ø160mm	Ø210mm	Ø260mm	Ø310mm	Ø390mm	Ø460mm
Drive unit height	133mm	155mm	190mm	220mm	260mm	280mm
Drive unit weight	8.5kg	17kg	30kg	48kg	80kg	115kg
Leaf-spring attachment angle	15°					
Rated voltage	200V(*1)					
Rated current	0.4A	0.8A	1.5A	2.0A	2.5A	3.0A
Vibration frequency	100 ~ 180Hz					
Unprocessed bowl diameter (cylindrical)	150mm	200mm	250mm	300mm	375mm	450mm
Max. bowl diameter (cylindrical)	250mm	320mm	400mm	500mm	600mm	700mm
Max. amplitude (periphery of standard cylindrical bowl)	0.6mm			0.8mm		
Max. loaded weight (workpiece + bowl weight)	2.3kg	4kg	8kg	12.5kg	17kg	26kg
Power cable	0.5 mm <sup>2</sup>	0.75 mm <sup>2</sup>	0.75 mm <sup>2</sup>	0.75 mm <sup>2</sup>	1.25 mm <sup>2</sup>	1.25 mm <sup>2</sup>
Compatible controllers (*2)	AC200V	Single	C8-1VF		C8-3VF	
		Twin	C9-3VFT-2			
	AC100V	Single	C8-1VF + C8-TR		C8-3VF + C8-TR	
		Twin	C9-3VFT-1			

\*1 With an AC100V power source, C8-TR transformer (sold separately)

\*2 Standard Controller is AC200V single Type

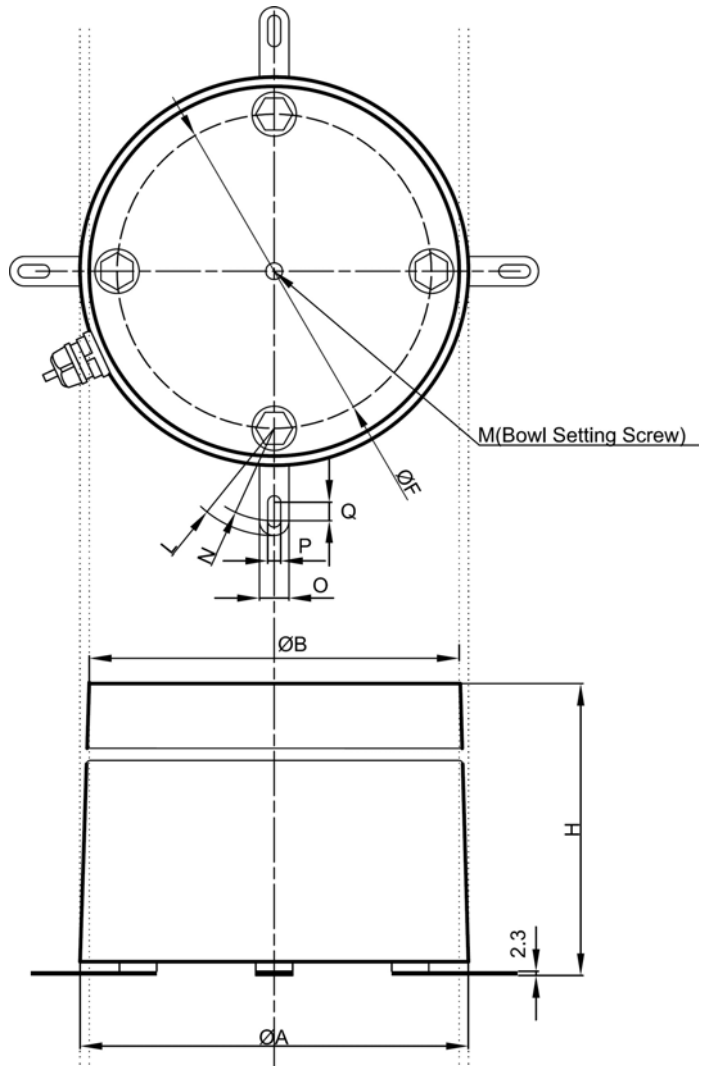
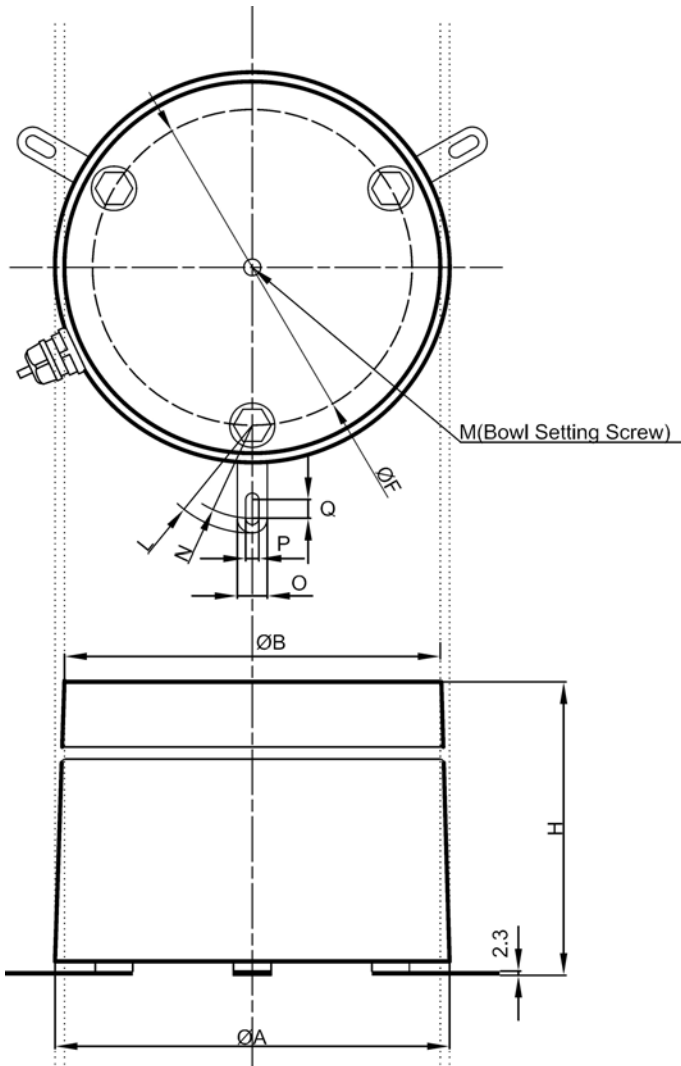
No.2, Tuas Link 1, Jurong Industrial Estate, Singapore 638590  
 Tel: (65) 6863 4011 Fax: (65) 6863 4022 Website: [www.fujicon.com.sg](http://www.fujicon.com.sg)

SHK-5

# EA/ER series Dimensions

EA-15/ 20

EA-25/ 30/ 38/ 45



Unit: mm

Model	H	$\varnothing A$	$\varnothing B$	M	$\varnothing F$	L	N	O	P	Q
EA-15	130-133-136	160	150	M8	130	58	50	16	7	10
EA-20	152-155-158	210	200	M10	170	58	50	16	7	10
EA-25	187-190-193	260	250	M12	216	58	50	16	7	10
EA-30	215-220-225	310	300	M12	252	85	75	20	7	20
EA-38	255-260-265	390	375	M16	324	85	75	20	7	20
EA-45	275-280-285	460	450	M16	390	85	75	20	7	20