

ERseries—50-90Hz

Steady delivery of workpieces of all sizes

With low vibration frequencies of 50 to 90 Hz and large amplitude of 1.2 mm, this series is suited to workpieces from 10 mm up in size. Bowl diameters from 250 to 1,100 mm can be accommodated, to give powerful feeder performance.



Specifications

Model	ER-25	ER-30	ER-38	ER-45	ER-55	ER-65	ER-75
Drive unit outer diameter	Ø260mm	Ø310mm	Ø390mm	Ø460mm	Ø560mm	Ø660mm	Ø760mm
Drive unit height	198mm	225mm	264mm	286mm	321mm	321mm	321mm
Drive unit weight	30kg	48kg	80kg	115kg	160kg	200kg	260kg
Leaf-spring attachment angle	20°						
Rated voltage	200V (*1)						
Rated current	1.0A	1.5A	2.0A	2.5A	5.0A	5.0A	5.0A
Vibration frequency	50 ~ 90Hz						
Unprocessed bowl diameter (cylindrical)	250mm	300mm	375mm	450mm	550mm	650mm	750mm
Max. bowl diameter (cylindrical)	400mm	500mm	600mm	700mm	820mm	970mm	1100mm
Max. amplitude (periphery of standard cylindrical bowl)	1.2mm					1.4mm	
Max. loaded weight (workpiece + bowl weight)	8kg	12.5kg	17kg	26kg	70kg	85kg	120kg
Power cable	0.75mm ²	0.75mm ²	1.25mm ²	1.25mm ²	2.0mm ²	2.0mm ²	2.0mm ²
Compatible controllers (*2)	AC200V	Single	C8-1VF	C8-3VF		C8-5VF	
		Twin	C9-3VFT-2				
	AC100V	Single	C8-1VF+C8-TR	C8-3VF+C8-TR		-	
		Twin	C9-3VFT-1				

*1 With an AC100V power source, C8-TR transformer (sold separately)

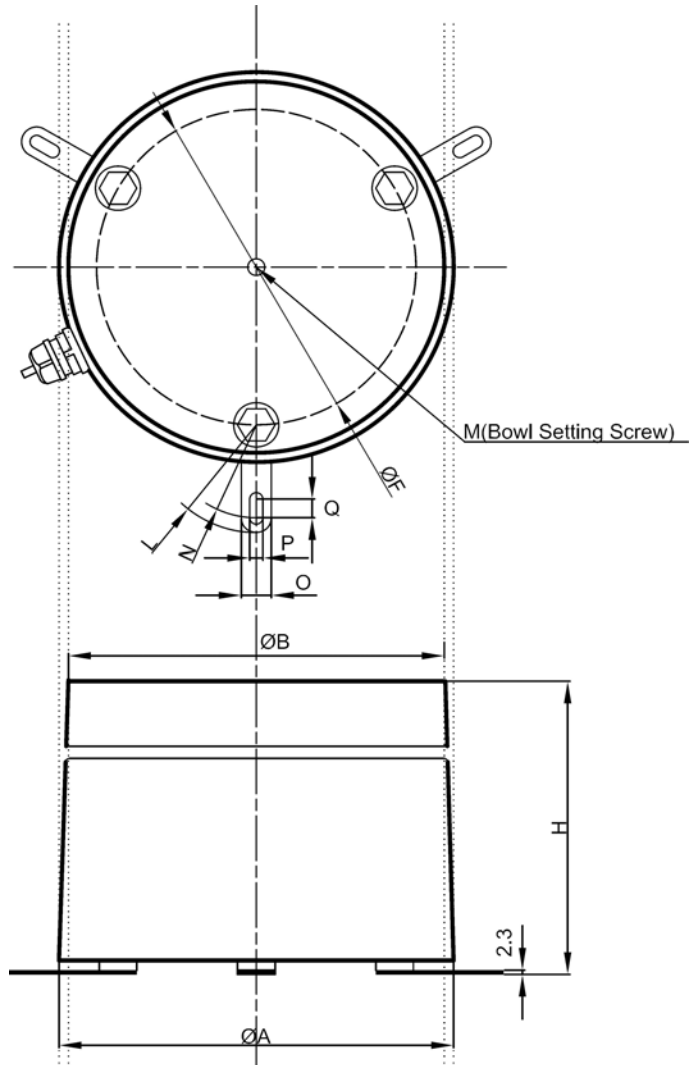
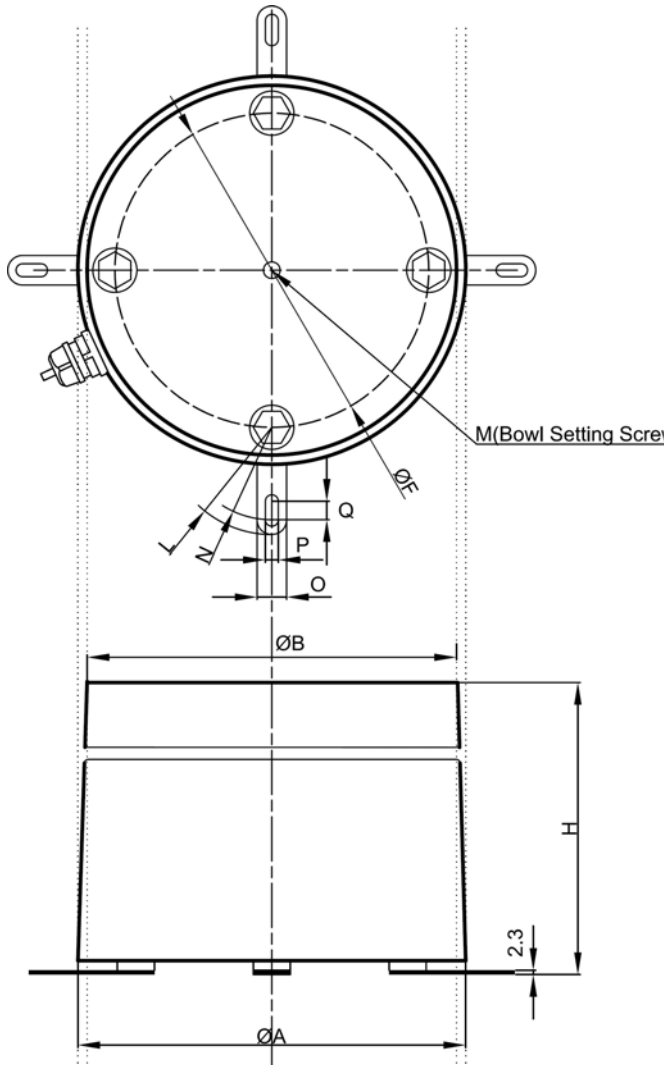
No.2, Tuas Link 1, Jurong Industrial Estate, Singapore 638590
 Tel: (65) 6863 4011 Fax: (65) 6863 4022 Website: www.fujicon.com.sg

SHK-7

EA/ER series Dimensions

ER-25/ 30/ 38/ 45/ 55/ 65

ER-75



Unit: mm

Model	H	ØA	ØB	M	ØF	L	N	O	P	Q
ER-25	194-198-202	260	250	M12	216	58	50	16	7	10
ER-30	218-225-232	310	300	M12	252	85	75	20	7	20
ER-38	257-264-271	390	375	M16	324	85	75	20	7	20
ER-45	280-286-292	460	450	M16	390	85	75	20	7	20
ER-55	312-321-330	560	550	M20	450	140	125	25	9	30
ER-65	312-321-330	660	650	M20	550	140	125	25	9	30
ER-75	312-321-330	760	750	M20	640	140	125	25	9	30